

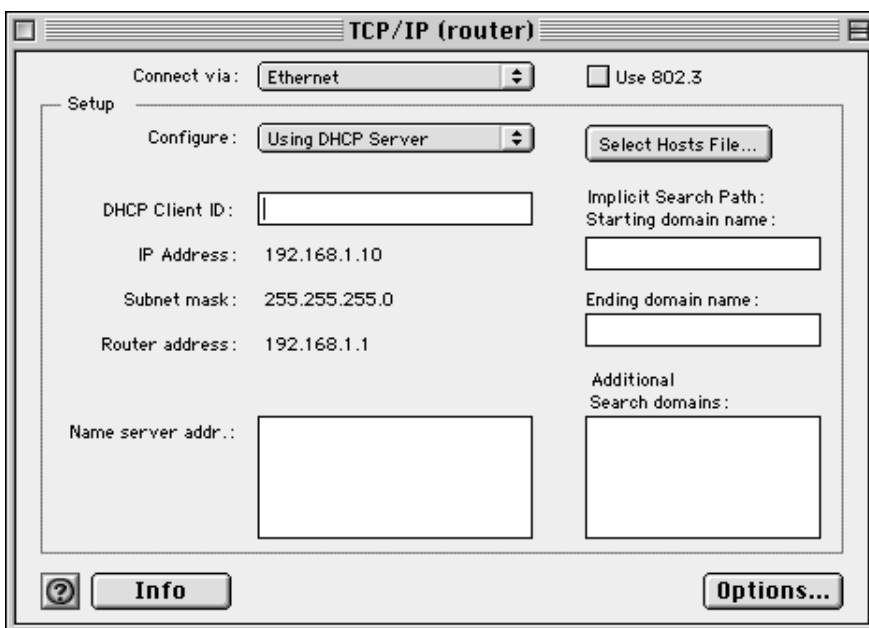
## DrayTek Vigor 2600We Wireless and 4-port Ethernet router

Used to connect two beige G3/233 PowerMacs using OS9.x, A Pentium P4 1.6Gb (Windows XP) and an iBook 500MHz (OS10.2) to an ADSL connection (eg BT Home 500).



Connect the G3/233 to port P1 of the router with the Ethernet cable provided with the latter. Connect the power supply to the router. Connect the modem lead from the - enabled phone socket via a microfilter. Power up the router and the G3/233.

In the Apple Menu select Control Panels -> TCP/IP



Select Ethernet and select 'Using DHCP Server'. All other fields should be blank, although the above image shows how this dialogue will look after closing and returning to it - the router allocates the IP address - that's what DHCP and the router do. The whole point is that you have an ADSL connection and one IP address. The IP address is the way you are recognised on the internet. If you tried to use two or more computers on the same ADSL connection, the information sent back would be to both of

them at once! The router sits on the ADSL and receives all of the data. It allocates a new IP address to each of your computers inside your network. Then when data is received, the router works out which computer it was intended for and routes it to the right one - hence it's called a router.

DHCP is a way to automatically allocate an IP address to each device as it's needed. The alternative would be to manually define IP addresses to each device and make sure you never accidentally use the same one twice. But a DHCP server (which serves out unique IP addresses as required) does the job for you. Just set each device on your network to DHCP and the rest happens automatically.

I.D. **Connect to "192.168.1.1" as:**  
**User ID:**   
**Password:**   
**Realm: Login to the Router Web**  
 Remember Password

Launch your browser (eg. Internet Explorer). In the browser address line type 192.168.1.1 and press Return.

Leave the User ID and Password blank and click OK.

The browser is now communicating with the router and you can begin the setup procedure.

**Setup Main Menu**  
 DrayTek Corp.

- Model : Vigor2600 annex A
- Firmware Version : v2.3.6\_UK
- Build Date/Time : Thu Apr 24 10:34:24 8 2008
- LAN MAC Address : 00-50-7F-08-86-46

**Basic Setup (Setup First)**  
 >> Administrator Password Setup  
 >> LAN TCP/IP and DHCP Setup  
 >> Wireless LAN Setup

**Advanced Setup**  
 >> Dynamic DNS Setup  
 >> Call Schedule Setup  
 >> NAT Setup  
 >> RADIUS Setup  
 >> Static Route Setup  
 >> IP Filter/Firewall Setup  
 >> VPN and Remote Access Setup  
 >> UPNP Service Setup

**Quick Setup**  
 >> Internet Access Setup

**System Management**  
 >> Online Status  
 >> VPN Connection Management  
 >> Configuration Backup / Restoration  
 >> SysLog Setup  
 >> Time Setup  
 >> Management Setup  
 >> Diagnostic Tools  
 >> Reboot System  
 >> Firmware Upgrade (FTP Server)

Copyright (c) 2002, DrayTek Corp. All Rights Reserved.

Click "Internet Access Setup".

**DSL Modem Internet Access**  
 Auto detect ATM/DSL settings  
 >> PPPoE / PPPoA  
 >> MPoA (RFC1483/2684)

Copyright (c) 2002, DrayTek Corp. All Rights Reserved.

Click "Autodetect ATM/DSL settings".

A warning message will appear. Assuming that your ISP does NOT want you to use a "fixed IP address" click "Cancel".

http://192.168.1.1/doc/country.htm

Please select your country area :

UK

OK

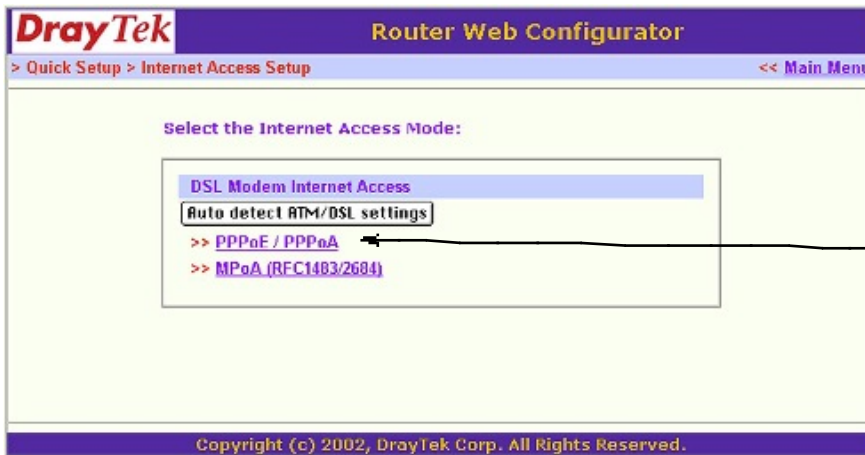
Then select your country from the drop-down country area list and click OK. It will take about a minute to configure the type of connection for you. It's probably PPPoE/PPPoA but let it work it out to be sure.



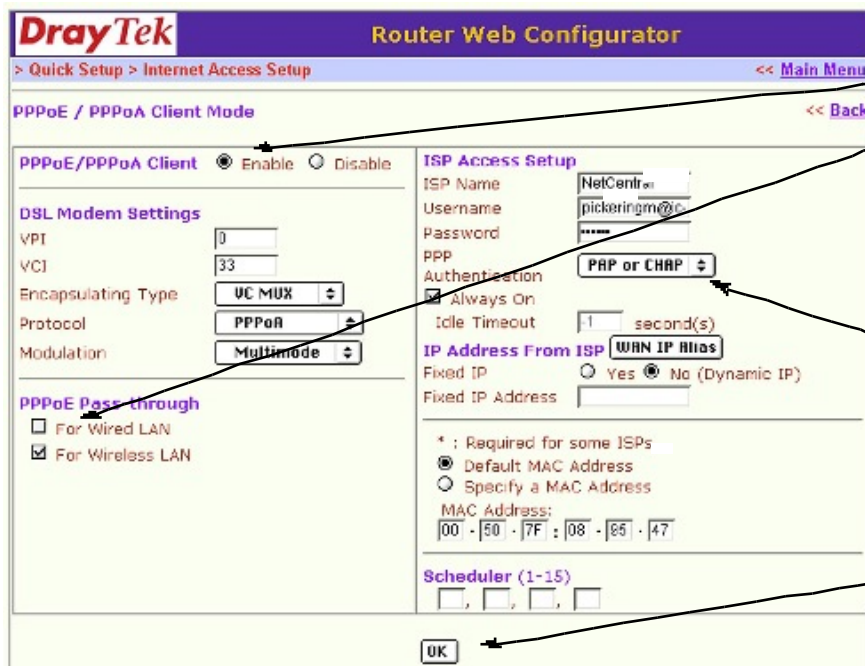
A message window will appear to tell you when it has detected the DSL settings.

Click OK.

Now return to the Internet Access Setup menu.



Click PPPoE/PPPoA



Click the Enable button.

Click "For Wireless LAN" checkbox.

Enter any name for your ISP.

Enter your username.

Enter your password.

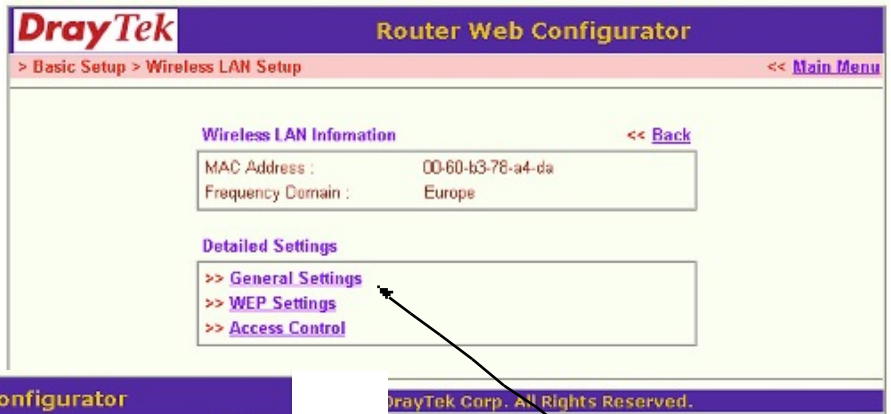
Select "PAP or CHAP".

Don't touch any other settings.

Click OK.

Return to the Main Menu.

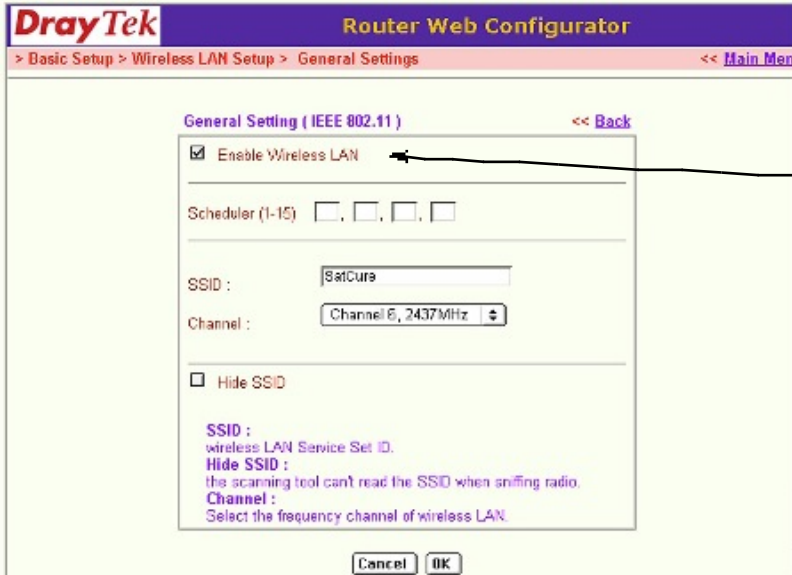
From the Main Menu, Click on "Wireless LAN Setup".



Click on "General Settings".

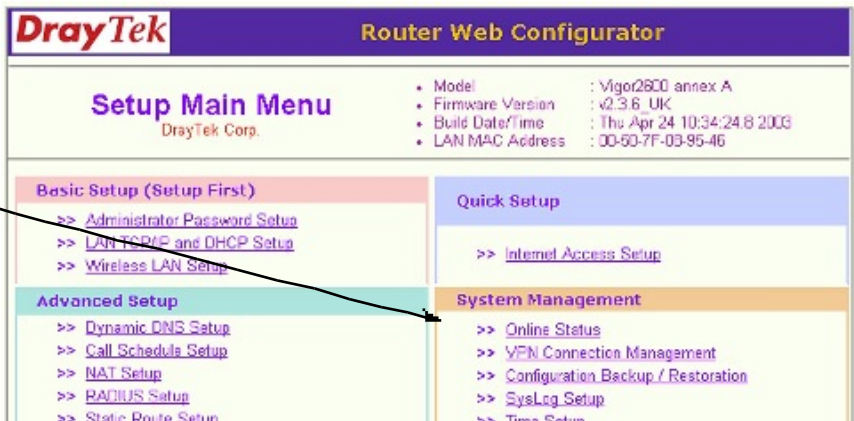
Tick "Enable Wireless LAN".

Type a name for SSID. This becomes the name for your wireless network. We recommend that you don't leave the default name that will already be showing there - it reduces the security of your network because others can guess the default name.



Click "OK".

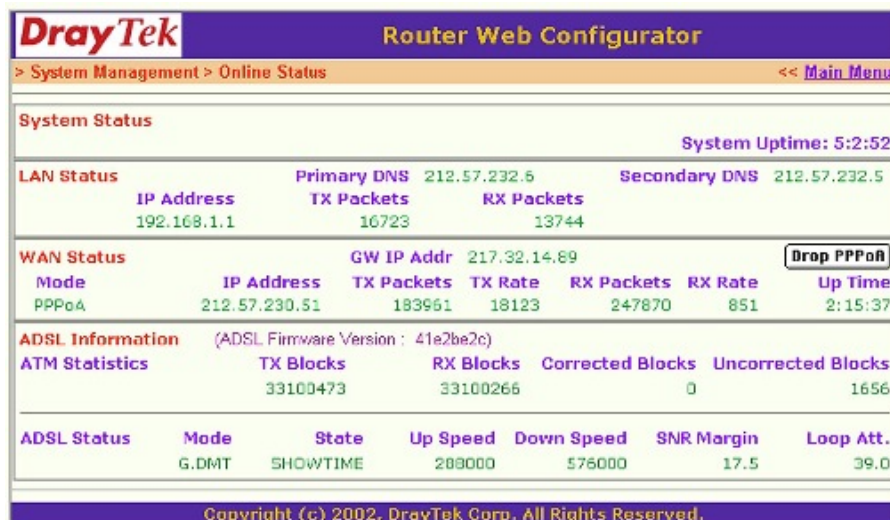
In the Main Menu click "Online Status".



The screen should now display the system status and will "refresh" every couple of seconds.

In the centre the GW IP Address should appear and there should be a button on the right "Drop PPPoA".

Setup is now complete for the G3. You can now search the internet from your browser.



There's no need to connect or disconnect at all - the router should be left switched on all the time. When you switch on your computer, the internet connection will still be live.