

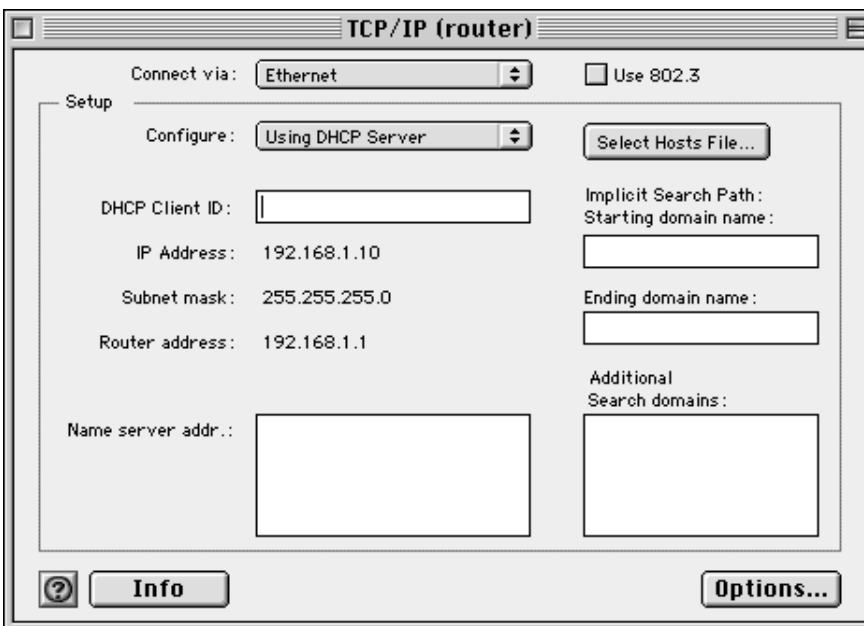
## Belkin F5D7632uk4 Wireless and 4-port Ethernet router

Used to connect a G4/400 (OS10.3.7) to an ADSL connection via Ethernet cable.



Connect the power supply to the router. Connect the modem lead from the -enabled phone socket via a microfilter. Power up the router and the Mac.

In the OS9 Apple Menu select Control Panels -> TCP/IP  
Select Ethernet and select configure "Using DHCP Server".



All other fields should be blank, although the above image shows how this dialogue will look after closing and returning to it - the router allocates the IP address - that's what DHCP and the router do. The whole point is that you have an ADSL connection and one IP address. The IP address is the way you are recognised on the internet. If you tried to use two or more computers on the same ADSL connection, the information sent back would be to both of them at once! The router sits on the ADSL and receives all of the

data. It allocates a new IP address to each of your computers inside your network. Then when data is received, the router works out which computer it was intended for and routes it to the right one - hence it's called a router.

DHCP is a way to automatically allocate an IP address to each device as it's needed. The alternative would be to manually define IP addresses to each device and make sure you never accidentally use the same one twice. But a DHCP server (which serves out unique IP addresses as required) does the job for you. Just set each device on your network to DHCP and the rest happens automatically.

If you are using OSX the set up is very similar. Click on the Apple menu icon and select "System Preferences". Click on "Network". Click on the Drop-down list to Show "Built-in Ethernet". and select TCP/IP. Now click on the "Configure IPv4:" drop-down list to show "Using DHCP".



Click on the "Ethernet" button and make sure it is set to Configure "Automatically". Click on the PPPoE button and make sure that "Connect using PPPoE" is **not** selected. Close the window by clicking on the red button.



Launch your browser (eg. Internet Explorer). In the browser address line type 192.168.2.1 and press Return.

Leave the User ID and Password blank and click OK.

The browser is now communicating with the router and you can begin the setup procedure.

Note 1: the address 192.168.2.1 is specific to the router. If you use a different model the number may be different. Check the instructions that came with the router.

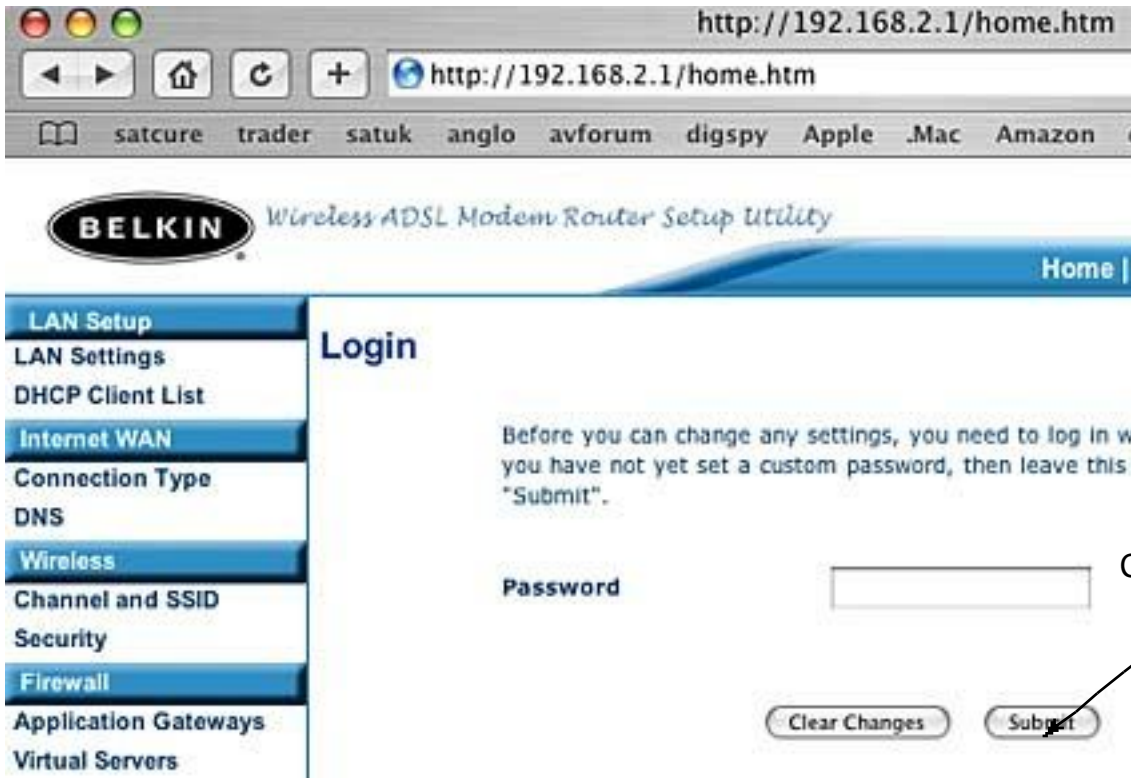
Note 2: Some browsers (e.g. Safari) may be incompatible with the router and show an unexpected blank data screen.

Note 3: Save the router address as one of your "Favourites" for easy access later.

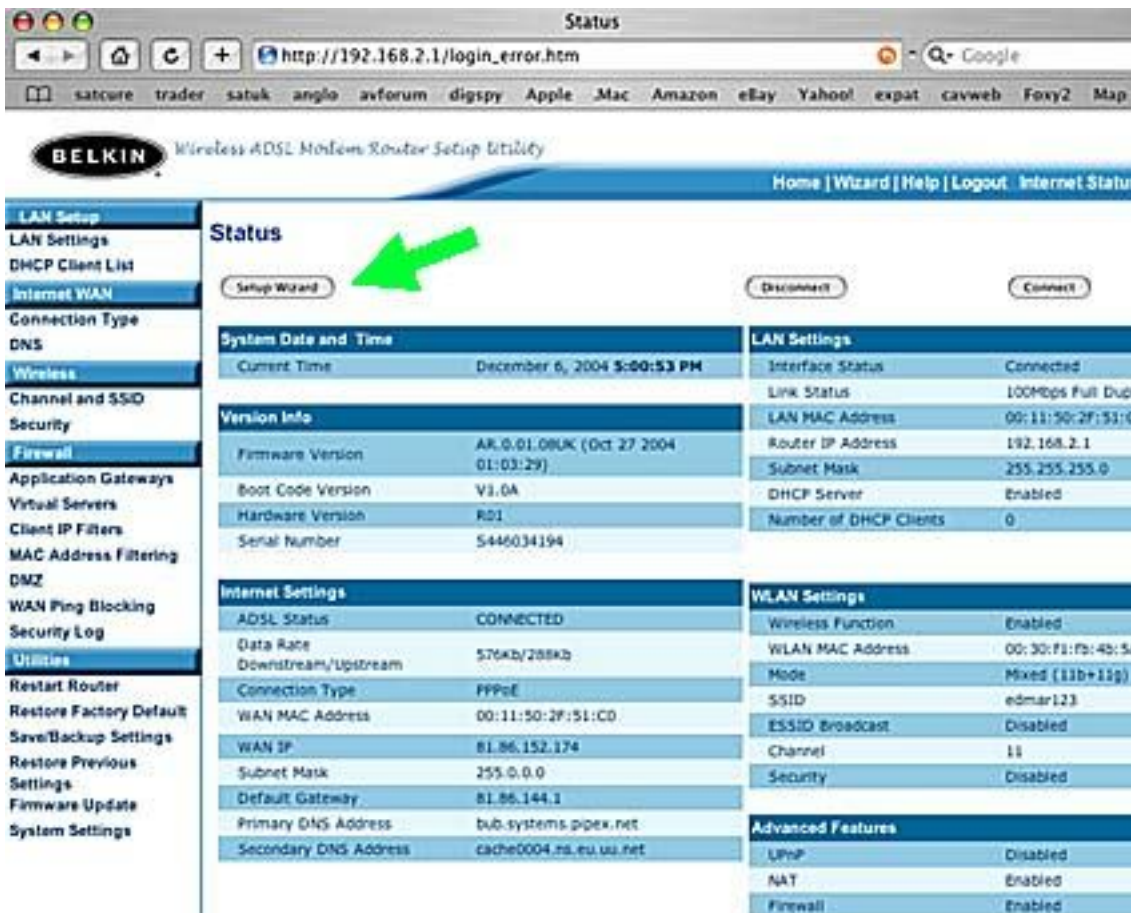
Note 4: Don't worry about the password. You must add it later when everything is working.

The following screen shots show typical "setup wizard" procedure for the Belkin F5D7632uk router. **Later models are similar but may have less screens to complete.**

The following screen shots show typical “setup wizard” procedure for the Belkin F5D7632uk router. **Later models are similar but may have less screens to complete.**



You should now see the following screen. If it is blank apart from the “Setup Wizard” button, that’s because ADSL is not enabled on your phone line. If it goes blank after you click the “Setup Wizard” button, that indicates browser incompatibility. Try a different Internet browser.



Wizard

http://192.168.2.1/wizard\_time\_zone.htm

satcure trader satuk anglo avforum digspy Apple .Mac Amazon eBay

**BELKIN** Wireless ADSL Modem Router Setup Utility

Home | Wizard

**LAN Setup**

LAN Settings  
DHCP Client List

**Internet WAN**

Connection Type  
DNS

**Wireless**

Channel and SSID  
Security

Firewall

### Wizard > 1. Time Zone Settings

In this tab you can select time zone of your location.

Enable Daylight Savings

Time Zone: (GMT+00:00)England

Next

Select your time zone.

Wizard

http://192.168.2.1/wizard\_connection\_type.htm

satcure trader satuk anglo avforum digspy Apple .Mac Am

**BELKIN** Wireless ADSL Modem Router Setup Utility

**LAN Setup**

LAN Settings  
DHCP Client List

**Internet WAN**

**Connection Type**

DNS

**Wireless**

Channel and SSID  
Security

Firewall

Application Gateways  
Virtual Servers

### Wizard > 2. Connection Type

The following information is usually provided by your ISP.  
Please select the Internet sharing protocol

PPPoE

PPPoA

Dynamic IP (1483 Bridged)

Static IP (IPoA)

Modem Only (Disable Internet Sharing)

Home | Wizard | Help | Logout

Select **PPPoA** which is what most ISPs use.

Wizard

Wizard > 3. Parameter Setting

The following information is usually provided by your ISP.

> Username: sl3p83@xtreme.pipc

> Password: \*\*\*\*\*

> Retype Password: \*\*\*\*\*

> VPI/VCI: 0 / 38

Back Next

Enter username and password. These are normally all lower case unless your ISP tells you otherwise.



- LAN Setup
- LAN Settings
- DHCP Client List
- Internet WAN
- Connection Type
- DNS
- Wireless
- Channel and SSID
- Security
- Firewall

### Wizard > 4. ADSL Mode

In this tab you can adjust ADSL operation mode of the Router.

ADSL Mode >  Annex A  Annex B

Back Next

Select Annex A unless your ISP tells you otherwise.

### Wizard > You have filled in the following Configuration Parameters

ADSL Firmware:

ADSL Mode	Annex A
-----------	---------

Time Zone:

Selected Time Zone	(GMT+00:00)England
--------------------	--------------------

ADSL Parameters:

Protocol	PPP over Ethernet
----------	-------------------

VPI / VCI	0 / 38
-----------	--------

ISP Parameters:

User Name	83@xtreme.pipex.net
-----------	---------------------

Password	*****
----------	-------

Back Apply

Click "Apply"

## Login

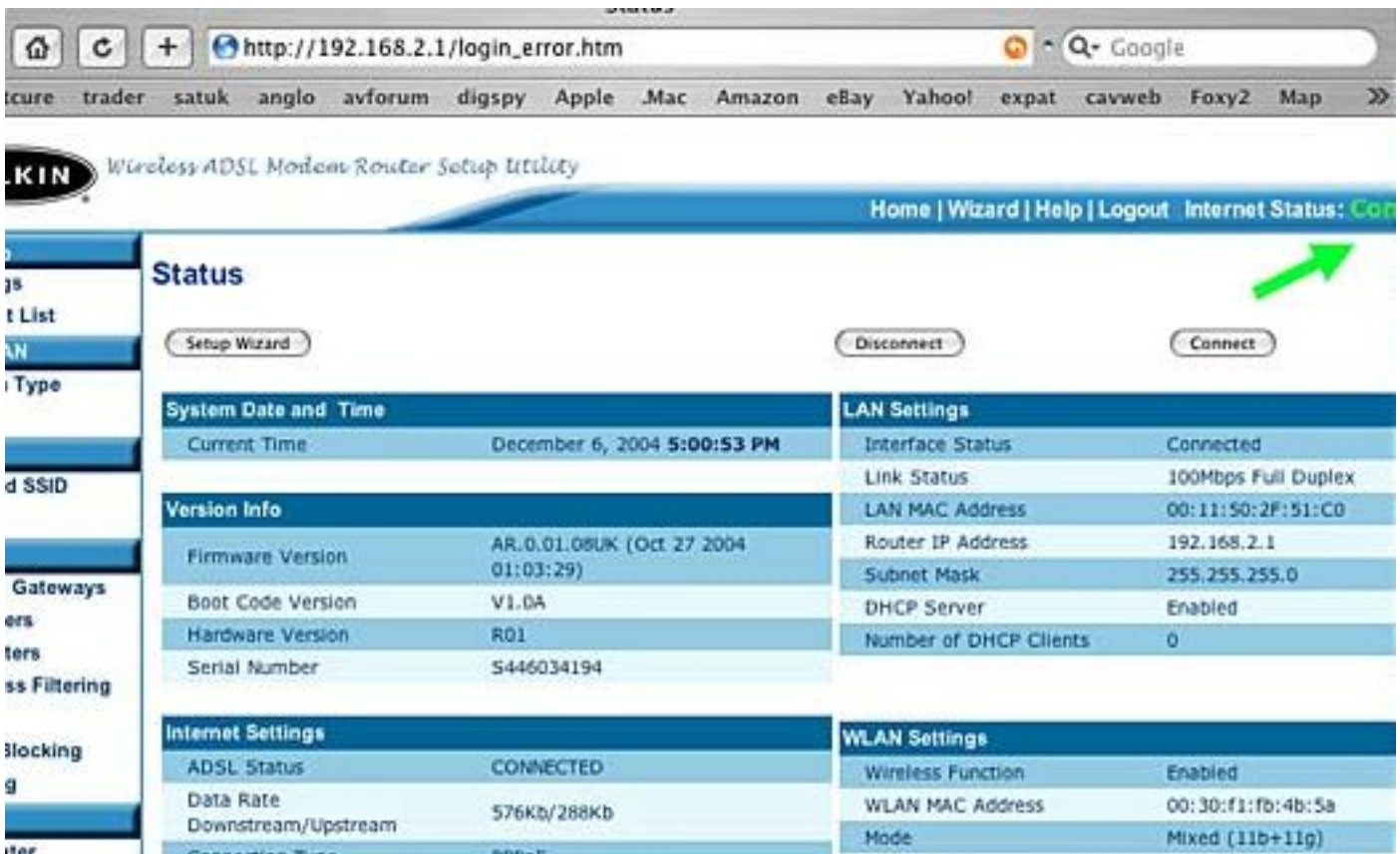
Before you can change any settings, you need to log in with a password. If you have not yet set a custom password, then leave this field blank and click "Submit".

Password

Clear Changes Submit

Leave blank. Click "Submit"

The router should “reboot” after settings are saved. In no more than 3 minutes, the status screen should change from “Disconnected” to “Connected”. If it doesn’t then check your settings again and check your username and password with your ISP.



Once a connection is established it will remain so as long as your Router is powered. Do not switch the router off! (You may power the computer down if you wish).



## Utilities > System Settings

Administrator Password:

The Router ships with NO password entered. If you wish to add a password, click here. [More Info](#)

Type in current Password >

Type in new Password >

Confirm new Password >

Login Timeout >

 (1-99 minutes)

[Clear Changes](#)

[Apply Changes](#)

To make your system secure you should now click on “Security” (or the appropriate menu link) and enter a password in lower case letters. (The current password should be blank so leave it that way)

Click “Apply Changes”. Your setup is now complete and you can quit.